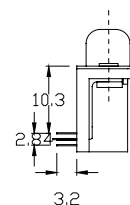
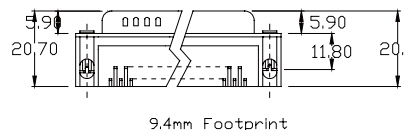
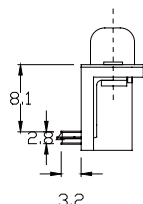
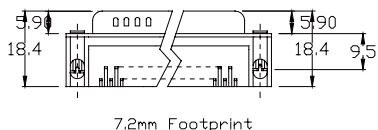
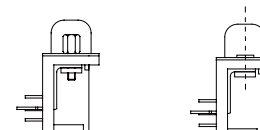
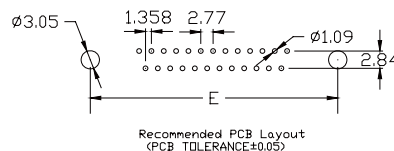
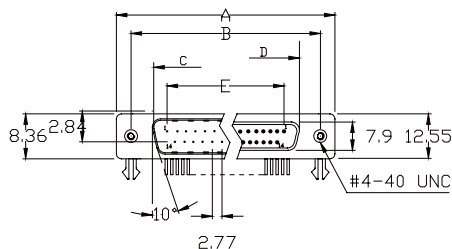


SPECIFICATION

Current Rate: 5 AMP
 Insulation Resistance: 1000mΩ Min
 Contact Resistance: 20mΩ Max
 Dielectric voltage: 1000V AC for one minute
 Operation Temperature: -55°C to +105°C

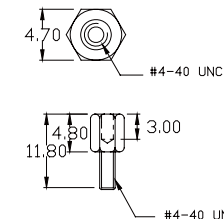
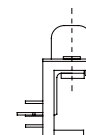
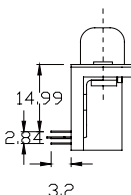
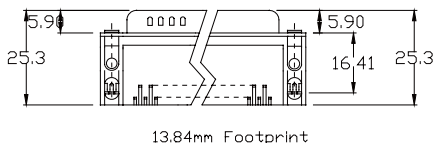
MATERIAL

Insulator: Polyester, UL94v-0
 ©Standard: P.B.T
 Contact Pin F: Phosphor Bronze
 M: Brass
 Shell-Steel zinc plated or tin plated or
 nickel plated Screw-Brass nickel plated



A

B

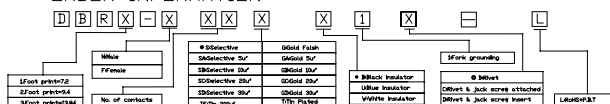


C

D

POSITION	A	B	C	D	E
15	30.81	24.99	16.92	16.33	11.08
25	39.14	33.32	25.50	24.66	19.39
37	53.04	47.04	38.96	38.38	33.24
62	69.32	63.50	55.42	54.84	49.86

ORDER INFORMATION



APPRO

CHECK

DRAWN

PART NO. DBRX-XXXXX1X-L

DESCRIPTION



ITEM NO.
 DRAW NO.
 UNIT
 TOLER

mm SCALE no
 NO.